

Product Sheet

H_ALPPL2(ALPG) MC38 Cell Line

Catalog number: GM-C32890

Version 3.3.1.241204

Description	H_ALPPL2(ALPG) MC38 Cell Line is a clonal stable MC38 cell line that constitutively expresses the human ALPPL2(ALPG) gene, constructed using lentiviral technology.
Quantity	5E6 Cells per vial, 1 mL
Product Format	1 vial of frozen cells
Shipping	Shipped on dry ice
Storage Conditions	Liquid nitrogen immediately upon receipt
Target	Human_ALPPL2(ALPG)
Gene ID/Uniprot ID	P10696
Host Cell	MC38
Recovery Medium	DMEM+10% FBS+1% P.S
Growth medium	DMEM+10% FBS+1% P.S+2.5 µg/mL Puromycin
Note	None
Freezing Medium	90% FBS+10% DMSO
Growth properties	Adherent
Growth Conditions	37°C, 5% CO ₂
Mycoplasma Testing	The cell line has been screened to confirm the absence of Mycoplasma species.
Safety considerations	Biosafety Level 2
Note	It is recommended to expand the cell culture and store a minimum of 10 vials at an early passage for potential future use.

Materials

Reagent	Manufacturer/Catalogue No.
DMEM	VivaCell/C3110-0500
Fetal Bovine Serum	Cegrogen biotech/A0500-3010
Pen/Strep	Thermo/15140-122
Puromycin	Genomeditech/ GM-040401
Anti-ALPPL2 mIgG2a antibody(SGN-ALPV)	Genomeditech/ GM-58773AB

Figures

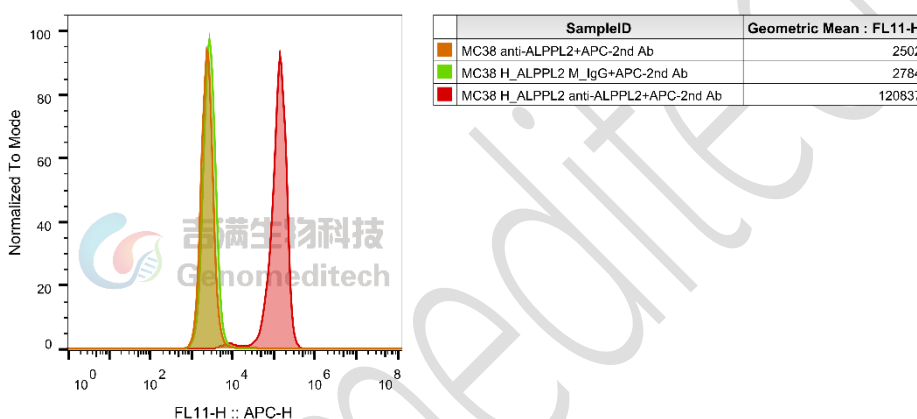


Figure 1 | H_ALPPL2(ALPG) MC38 Cell Line (Cat. GM-C32890) was determined by flow cytometry using Anti-ALPPL2 mIgG2a Antibody (Cat. [GM-58773AB](#)).

Cell Recovery

Recovery Medium: DMEM+10% FBS+1% P.S

To insure the highest level of viability, thaw the vial and initiate the culture as soon as possible upon receipt. If upon arrival, continued storage of the frozen culture is necessary, it should be stored in liquid nitrogen vapor phase and not at -70°C. Storage at -70°C will result in loss of viability.

- Thaw the vial by gentle agitation in a 37°C water bath. To reduce the possibility of contamination, keep the O-ring and cap out of the water. Thawing should be rapid (approximately 2 - 3 minutes).
- Remove the vial from the water bath as soon as the contents are thawed, and decontaminate by dipping in or spraying with 70% ethanol. All of the operations from this point on should be carried out under strict aseptic conditions.
- Transfer the vial contents to a centrifuge tube containing 5.0 mL complete culture medium and spin at approximately 176 x g for 5 minutes. Discard supernatant.
- Resuspend cell pellet with the recommended recovery medium. And dispense into appropriate culture dishes.

- e) Incubate the culture at 37°C in a suitable incubator. A 5% CO₂ in air atmosphere is recommended if using the medium described on this product sheet.

Cell Freezing

Freezing Medium: 90% FBS+10% DMSO

- Centrifuge at 176 x g for 3 minutes to collect cells.
- Resuspend the cells in pre-cooled freezing medium and adjust the cell density to 5E6 cells/mL.
- Aliquot 1 mL into each vial.
- Place the vial in a controlled-rate freezing container and store at -80°C for at least 1 day, then transfer to liquid nitrogen as soon as possible.

Cell passage

Growth medium: DMEM+10% FBS+1% P.S+2.5 µg/mL Puromycin

For the first 1 to 2 passages post-resuscitation, use the recovery medium. Once the cells have stabilized, switch to a growth medium.

- Remove and discard culture medium.
- Briefly rinse the cell layer with PBS to remove all traces of serum that contains trypsin inhibitor.
- Add 1.0 mL of 0.25% (w/v) Trypsin-EDTA solution to dish and observe cells under an inverted microscope until cell layer is dispersed (usually within 30 to 60 seconds at 37°C).
- Note: To avoid clumping do not agitate the cells by hitting or shaking the flask while waiting for the cells to detach. Cells that are difficult to detach may be placed at 37°C to facilitate dispersal.
- Add 2.0 mL of growth medium to mix well and aspirate cells by gently pipetting.
- After centrifugation, resuspend the pellet and add appropriate aliquots of the cell suspension to new culture vessels.
- Incubate cultures at 37°C.

Subcultivation Ratio: A subcultivation ratio of 1:4 - 1:5 is recommended

Medium Renewal: Every 2 to 3 days

Notes

- After the stabilization of the cell condition, there will be fewer dead cells post-passage, the cell growth rate will tend to stabilize, cell morphology will become uniform, and the cells will appear robust.

Sequence

ALPPL2(ALPG) [P10696](#)

MQGPWVLLLLGLRLQLSLGIIPVEEENPDFWNRQAAEALGAAKKLQPAQTAAKNLIIFLDGDMGVSTVTAAR
ILKGQKKDKLGPETFLAMDRFPYVALSKTYSVDKHPVDSGATATAYLCGVKGNFQTIGLSAAARFNQCNTT
RGNEVISVMNRAKKAGKSVGVTTRVQHASPAGAYAHTVNRNWYSDADVPASARQEGCQDIATQLISNM
DIDVILGGGRKYMFPMTDPEYRDDYSQGGTRLDGKNLVQEWLAKHQGARYVWNRTELLQASLDPSVTH

LMGLFEPGDMKYEIHRDSTLDPSPMEMTEAALLLSRNPRGFFLFVEGGRIDHGHESRAYRALTETIMFDD
 AIERAGQLTSEEDTLSTADHSHVFSFGGYPLRGSSIFGLAPGKARDRKAYTVLLYGNPGYVLKDGARPD
 VTESESGSPEYRQQSAVPLDGETHAGEDVAVFARGPQAHLVHGVQEQTFAHVMAFAACLEPYTACDLAPR
 AGTTDAAHPGPSVVPALLPLLAGTLLLLGTATAP

Related Products

ALPPL2 ALPP	
Cynomolgus_ALPP HEK-293 Cell Line	H_ALPI HEK-293 Cell Line
H_ALPL HEK-293 Cell Line	H_ALPP CHO-K1 Cell Line
H_ALPP CT26 Cell Line	H_ALPP HEK-293 Cell Line
H_ALPP LLC1 Cell Line	H_ALPP MC38 Cell Line
H_ALPPL2(ALPG) CHO-K1 Cell Line	H_ALPPL2(ALPG) CT26 Cell Line
H_ALPPL2(ALPG) HEK-293 Cell Line	H_ALPPL2(ALPG) LLC1 Cell Line
Anti-ALPPL2 hIgG1 antibody(SGN-ALPV)	Anti-ALPPL2 mIgG2a antibody(SGN-ALPV)
Anti-H_ALPPL2 hIgG1 Reference Antibody (h12F3)	
Anti-ALPPL2-MMAE ADC(Dar4)[SGN-ALPV]	
Biotinylated Cynomolgus ALPI Protein; His-Avi Tag	Biotinylated Cynomolgus ALPL Protein; His-Avi Tag
Biotinylated Cynomolgus ALPP Protein; His-Avi Tag	Biotinylated Human ALPP Protein; His-Avi Tag
Biotinylated Human ALPI Protein; His-Avi Tag	Biotinylated Human ALPL Protein; His-Avi Tag
Cynomolgus ALPI Protein; His Tag	Cynomolgus ALPL Protein; His Tag
Human ALPI Protein; His Tag	Human ALPL Protein; His Tag
Human ALPP Protein; His Tag	Human ALPPL2 Protein; His Tag
ADC Related Product	
Anti-DXD Mouse IgG1 Antibody (23E21C5)	Anti-DXD Mouse IgG1 Antibody (4A5A12)
Anti-Dxd Mouse IgG2a Antibody (17D6A4)	Anti-Eribulin Mouse IgG2a Antibody (10F8G4)
Anti-MMAE Mouse IgG1 Antibody (11C10E3)	Anti-MMAE Mouse IgG2a Antibody (17A1K11)
Anti-MMAE Mouse IgG2a Antibody (8F6A3)	Mouse anti Human IgG-MMAE(Dar4)
Human IgG1 Isotype-DXD (Dar8)	Human IgG1 Isotype-Eribulin (Dar4)
Human IgG1 Isotype-MMAE (Dar4)	
Recombinant DT3C Protein	

Limited Use License Agreement

Genomeditech (Shanghai) Co., Ltd grants to the Licensee all intellectual property rights, exclusive, non-transferable, and non-sublicensable rights of the Licensed Materials; Genomeditech (Shanghai) Co., Ltd will retain ownership of the Licensed Materials, cell line history packages, progeny, and the Licensed Materials including modified materials.

Between Genomeditech (Shanghai) Co., Ltd, and Licensee, Licensee is not permitted to modify cell lines in any way. The Licensee shall not share, distribute, sell, sublicense, or otherwise provide the Licensed Materials, or progenitors to third

parties such as laboratories, departments, research institutions, hospitals, universities, or biotechnology companies for use other than for the purpose of outsourcing the Licensee's research.

Please refer to the Genomeditech Cell Line License Agreement for details.

Genomeditech